

Oven Software Installation for Windows XP (HC1 or HC2 controller)

(Software version 4.0.x.x)

Basic System requirement:

OS: Windows XP (Home or Professional)

Processor speed: preferred 2GHz or more

RAM: 256MB minimum

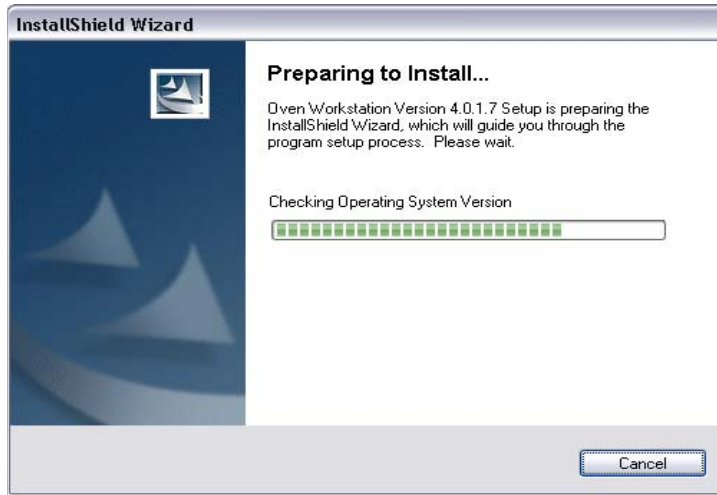
Communication using:

For HC1-x controller: Serial Com port-1 (built-in to computer main board)

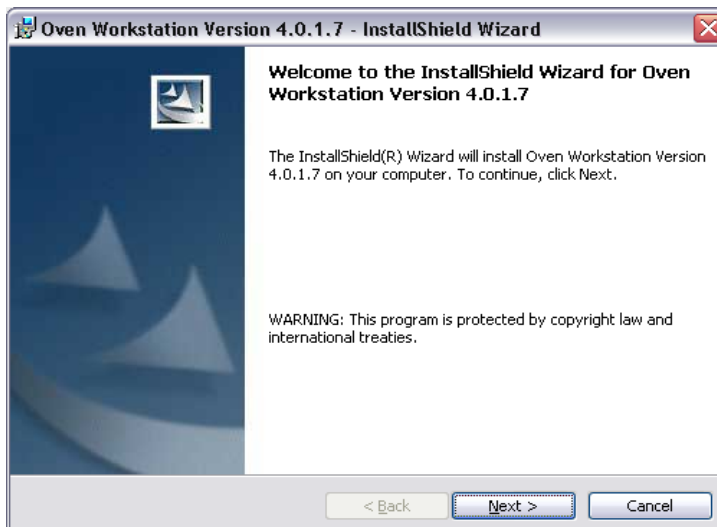
For HC2 controller: Ethernet (TCP/IP) port for HC2 controller

Note for HC1 controller:

- HC1 controller EPROM version should be 2.22. Older version EPROM may not function correctly for some options.
 - Oven program may perform poorly on computers not supplied by Heller Ind.
1. Make sure to uninstall existing oven software version before installing new software version. Follow separate instructions for uninstalling software.
 2. Run the setup file from the software installation CD or a drive folder. Installation screens will appear as



3. Click “Next >” to continue installation



Oven Software Installation for Windows XP (HC1 or HC2 controller)

(Software version 4.0.x.x)

4. Type user name, organization name and click “Next >”

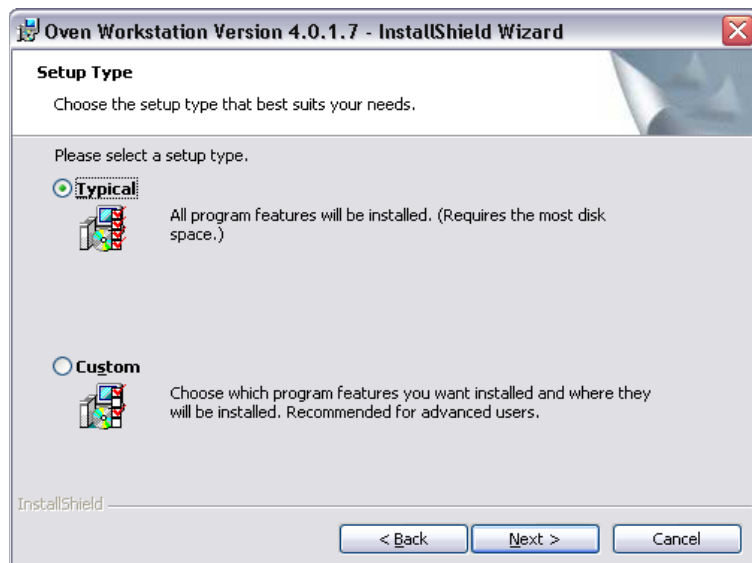


5. Destination folder:

It is recommended to keep default folder C:\Oven\.

In case where SECSGEM interface need to use change destination folder to C:\Heller\.

6. Keep Setup Type as Typical



Note: Select Custom setup type only when Korean language setup wizard is needed.


Oven Software Installation for Windows XP (HC1 or HC2 controller)

(Software version 4.0.x.x)

7. Review the installation settings and click “Install”.



Installation status screen and completion screen will appear.

8. Click on  to complete installation.
9. By default setup will start installing HC1 control driver to communication port.



Note: Microsoft has a driver certification program; since Oven_Board driver is not registered with Microsoft, above shown dialog will appear.

The correct response for

HC1 controller is “Continue Anyway” and for

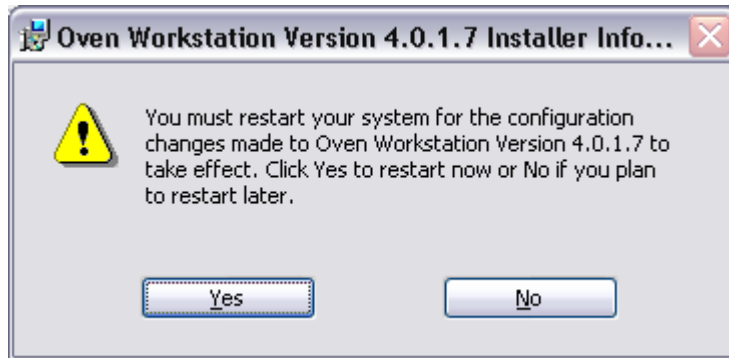
HC2 controller is “STOP Installation”.

If dialog appears again click “STOP Installation”.

Oven Software Installation for Windows XP (HC1 or HC2 controller)

(Software version 4.0.x.x)

10. Restart the computer after installation is complete.



Click Yes.

11. Before running the “Oven Operating Program”, “Oven Setup Wizard” needs to run to setup the oven configuration.

Start > Programs > Oven Workstation > Oven Setup Wizard,
Default user=oven, password=oven.

Select proper controller (default is HC1) on page1.

12. For HC2 controller, after Setup Wizard is complete, update the HC2 driver version by running C:\Oven\Drivers\Hc2DriverUpdate.exe.

Refer “HC2 controller driver version check” section for more information.

Note:

- Use built in serial communication port 1 for HC1 controller
 - Use RJ-45 network patch cable for communication with HC2 controller.
 - Default IP address of HC2 controller is: 192.168.10.250
 - Set Computer IP address as: 192.168.10.1
 - To Run the Oven Operating Program in DEMO mode –
 - Change the target in “Oven Operating Program” desktop shortcut properties to add DEMO as
"C:\Oven\Oven Operating Program.exe" DEMO
-

Oven Software Installation for Windows XP (HC1 or HC2 controller)

(Software version 4.0.x.x)

Setting up computer IP address: 192.168.10.1

If computer IP address is not set properly or network cable is not connected or power to HC2 controller is off, following error message will display.



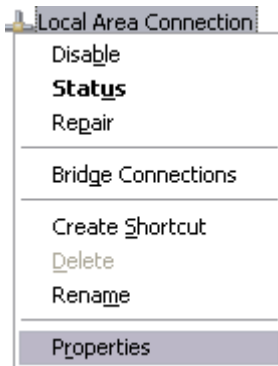
Follow steps below to set computer IP address.

Select network connections window as
Start -> Control Panel -> Network Connections

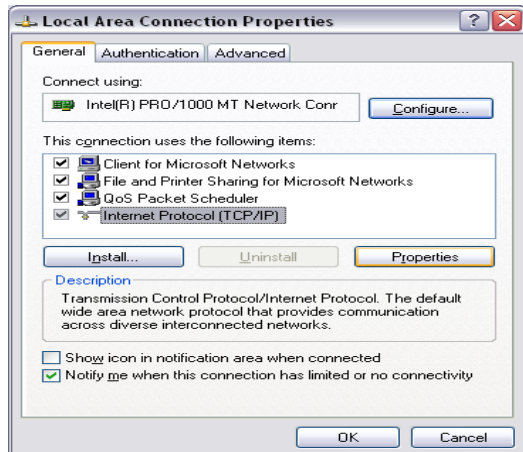


Double click on icon.

Right-click and select Properties of local area connection



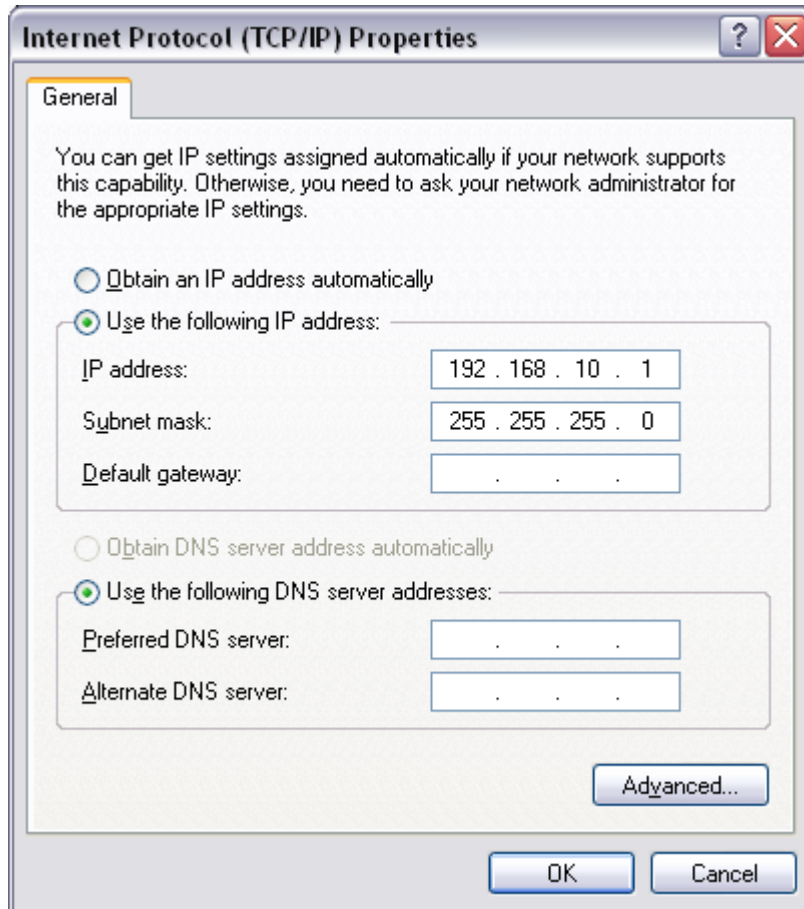
Select Internet Protocol (TCP/IP) and then click on Properties button



Oven Software Installation for Windows XP (HC1 or HC2 controller)

(Software version 4.0.x.x)

Set IP address and subnet mask as below:



Click OK to save changes.

Restart the computer.

Oven Software Installation for Windows XP (HC1 or HC2 controller)

(Software version 4.0.x.x)

HC2 controller driver version check:

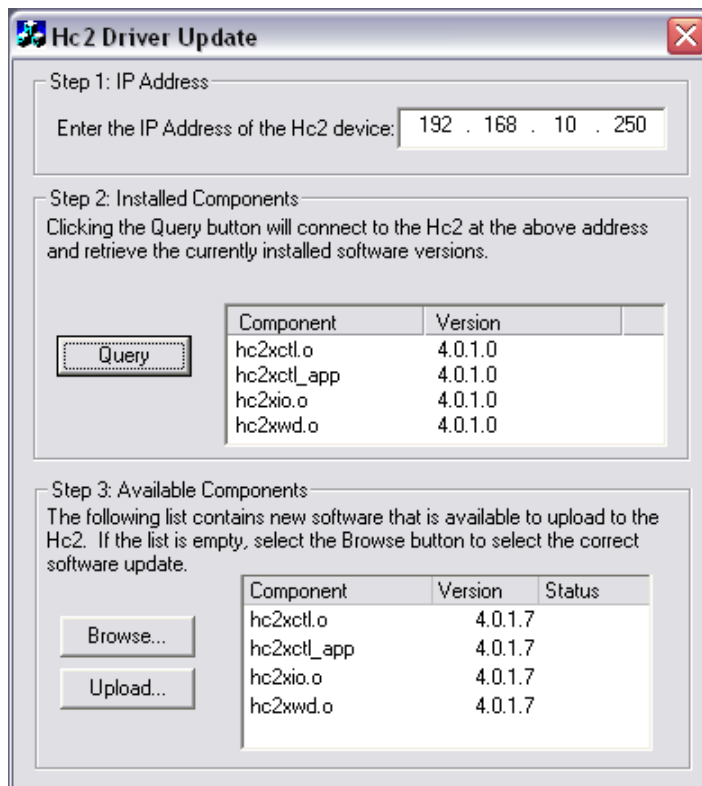
Note: For example if oven program version 4.0.1.7 is used with older HC2 controller driver/firmware version, following message will appear during oven program startup. Click OK to update the HC2 controller drivers.



Make sure Oven and Oven Operating Program are not running while performing driver update. After finishing update restart power to controller by turning off and on the oven power.

Driver update program will start automatically. If program did not start, manually run “C:\Oven\Drivers\Hc2DriverUpdate.exe” program.

Click on “**Query**” button which will list current installed driver versions from the connected HC2 controller.

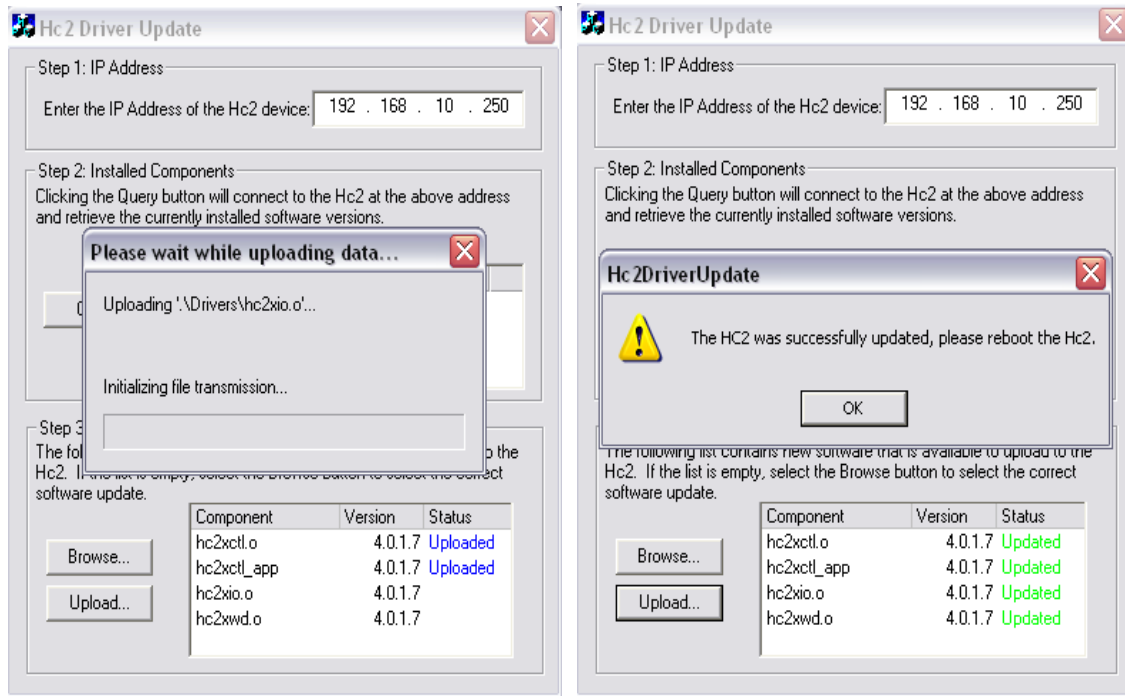


Oven Software Installation for Windows XP (HC1 or HC2 controller)

(Software version 4.0.x.x)

If installed driver version is older than available new driver version then **upload** new drivers.

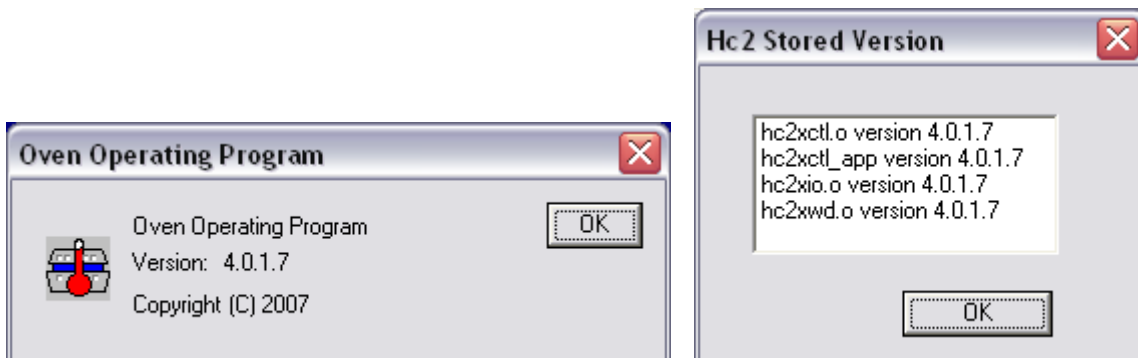
A process status window will show the driver update status.



Upon completion of updating all drivers, **reboot HC2 Controller** by turning off and on the HC2 power / oven power.

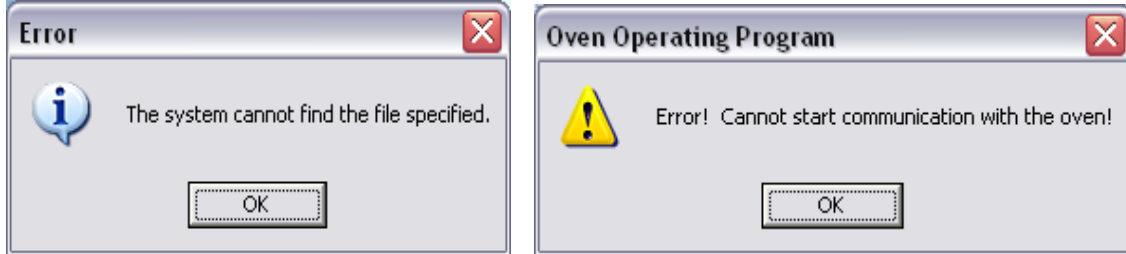
Check program version and HC2 version when oven program is running. Both versions should match unless specified.

Oven program version and HC2 version can be checked under Help menu.



Troubleshooting Oven Program start error on HC1 controller:

If “Oven_Board” driver is not installed properly following message will appear when try to run Oven Operating Program



In this case check Communications Port settings in Device Manager- Start -> Control Panel -> System

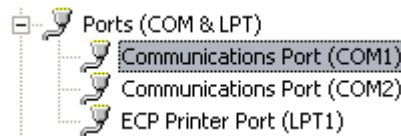


System

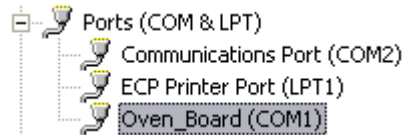
-> Hardware -> Device Manager



Oven_Board (HC1) driver not installed:-

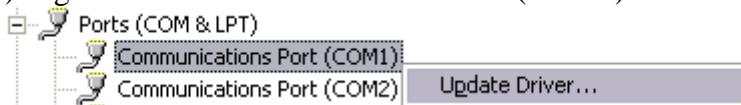


Oven_Board (HC1) driver installed on COM1:-



If driver is not installed then follow instructions below to update driver.

a) Right click on “Communications Port (COM1)” and then select “Update Driver”.



b) On Hardware Update Wizard screen do not select any Windows Update search option. Select No, not this time

Oven Software Installation for Windows XP (HC1 or HC2 controller)

(Software version 4.0.x.x)

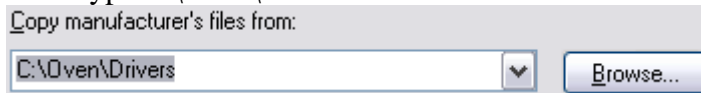
c) On next screen select Advanced option

- Install the software automatically (Recommended)
 Install from a list or specific location (Advanced)

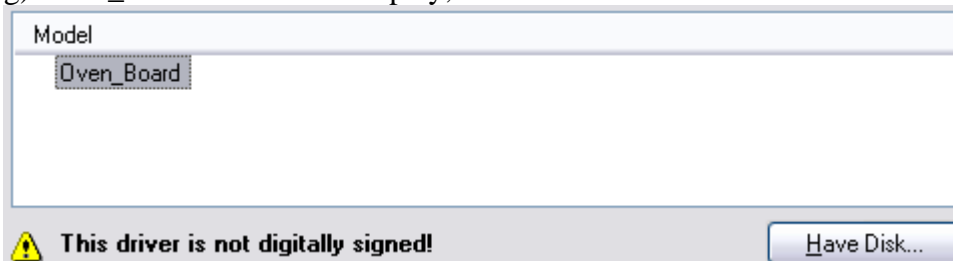
d) On next screen select Don't search. I will choose the driver to install.

e) On next screen click on

f) Browse or type C:\Oven\Drivers and then click OK.



g) Oven_Board driver will display, select and click next



h) Make sure to click on Hardware Installation screen.

After driver update, "Communications Port" label will change to "Oven_Board".

i) Restart the computer.